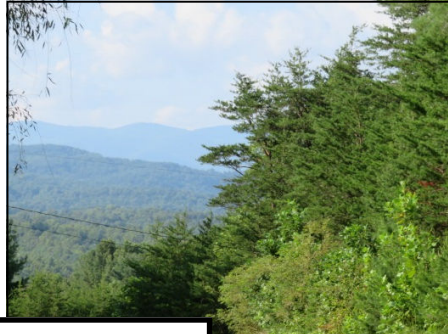
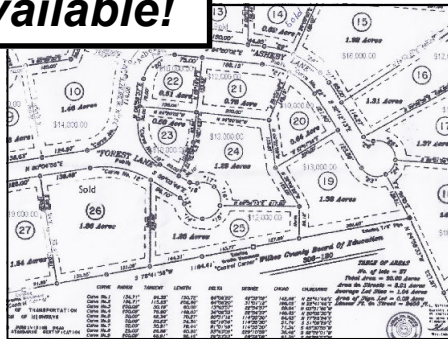


Auction #994: Wilkes County "Northwoods" Development, Hays, NC 28635

GO ONLINE TO BID NOW! swiftauctions.com/994



21 lots available!



This neighborhood development is conveniently located next to North Wilkes HS. Just off Traphill Rd. on North Ridge Dr., it features lush green lots with gorgeous Blue Ridge views. Community water provided by Blue Ridge Water is nearby and the parcels are ideal for doublewides, modular or custom homes.

Inspections to be completed prior to sale. Selling As-Is Where-Is.
Sale conducted for property owner. 10% down day of auction. 10% buyers premium.
Close in 30 days or less. Required proof of funds to close.
See website for full Terms & Conditions.

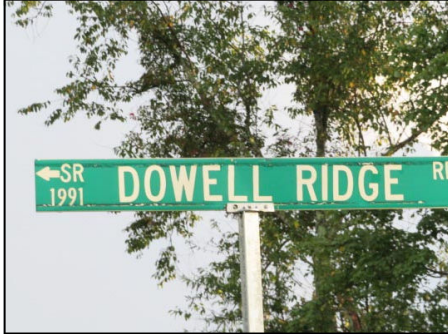
Sam and Deborah Swift, CRS, GRI
Senior Principal Brokers/Auctioneers
Swift Auction Sales, Inc. • Elkin, NC
336-526-7770 • deborah@swiftauctions.com
NCAF 6193 NCAL 4404 NCAL 6901



www.SwiftAuctions.com

Auction #994: Wilkes County Dowell Ridge Rd, Blue Ridge Land & Timber

GO ONLINE TO BID NOW! swiftauctions.com/994



This is a wonderful approximately 8 acre tract of wooded land in a rural community full of wildlife with lots of privacy and your own window to the Blue Ridge Mountains. Community water is available so you will not have to drill a well. You can make this build your new home in this location or create a special family retreat.

Inspections to be completed prior to sale. Selling As-Is Where-Is.
Sale conducted for property owner. 10% down day of auction. 10% buyers premium.
Close in 30 days or less. Required proof of funds to close.
See website for full Terms & Conditions.

Sam and Deborah Swift, CRS, GRI
Senior Principal Brokers/Auctioneers
Swift Auction Sales, Inc. • Elkin, NC
336-526-7770 • deborah@swiftauctions.com
NCAF 6193 NCAL 4404 NCAL 6901



www.SwiftAuctions.com